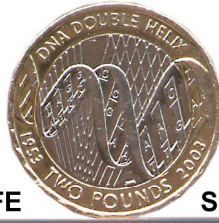


Murraypro

Cutting **COST**
NOT CORNERS

**Compact
STEREO**



LIFE SIZE

**PICO
PPM**



We can't help with the Double Helix
but we do know about AUDIO MONITORING

Miniature Stereo PPM, ideal for NLE Monitoring

PICO has been designed specifically for Professional applications requiring stereo metering to PPM specification. As with all Murraypro audio metering, that vital parameter **STEREO PHASE**, is continuously monitored by "Traffic Light" logic; a normally green LED snapping to red immediately trouble is detected, instantly flagging the problem to busy Operators. Each channel is monitored by an ultra-bright red LED, which gives clear warning when the audio level has exceeded **+8.15dBV.7** Pico has carved a niche for itself in "audio-for-editing" equipment, and it is frequently specified in *High End* installations throughout the Industry. PICO's extremely low external magnetic field means that it can be located adjacent to CRT equipment without any effect on either colour purity or scan geometry. Installation Engineers are particularly pleased with the high impedance looping inputs on XLR-3s and the IEC power input, which eliminates "wall warts". PICO's bright white LED illumination means the PPM's pointer and scale are clearly visible, even in subdued Control Area lighting.



Outline Specification

- * 1U High, 158W & 190 mm deep.
- * Looping XLR connectors.
- * Internal Mains PSU on IEC.
- * White LED illumination.
- * AES interface option.
- * "Silky smooth" PPM drive.
- * Peak LEDs at +8.15dBV.7
- * Stereo PHASE monitoring.
- * Low heat, < 3 Watts.
- * External +12 Volt option.
- * Low magnetic field.
- * Stout alloy housing, 750Grm.
- * BAL or UNBAL operation .
- * PPM ballistics & scaling.
- * >+/- 10dB gain adjustment.
- * Realistically priced.

Murraypro
8, Glamorgan Road,
Hampton Wick,
KT1 4HP UK

T: +44 (0)20 8943 1920

www.murraypro.com